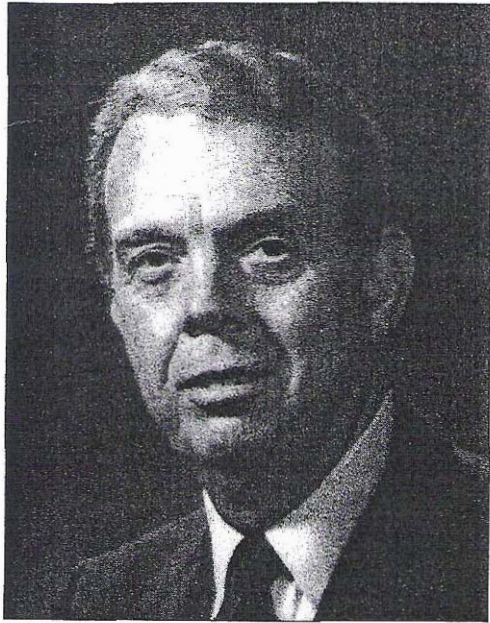


# PRESIDENT'S MESSAGE

BY REGINALD W. BARRETT, CMfgE



## 1990-Leveraging Resources to Strengthen Manufacturing Education

During 1990, the SME Foundation's Board of Directors continued to focus its efforts to combine the resources of education, industry, and the Society to improve the quality and development of manufacturing engineering and technology education.

These efforts have been considerable throughout the Foundation's eleven years of grant-making (see figure 1).

During this time, the Foundation has made a total of 820 grants totaling \$7.6 million in cash and equipment gifts. Because the Society underwrites all of the Foundation's administrative costs, each of these dollars flows unencumbered to aid manufacturing engineering and technology education.

But this achievement is not the full story. The Foundation's grant administration policies have also encouraged 1,545 grant applicants to seek an additional \$26.1 million in institutional support and another \$17.3 million from industry sources.

Thus, over eleven years, the net effect of the Foundation's grant making has been to channel combined funds of \$51 million to manufacturing engineering and technology education.

As Foundation grant awards have steadily increased, so have the numbers of manufacturing engineering and technology programs accredited by the Accreditation Board for Engineering and Technology (see figures 2 and 3).

This programmatic growth ensures that more colleges and universities will graduate manufacturing engineers and technologists to complement those in the labor force.

Pleased with these developments, our Board of Directors has adopted progressive fund raising strategies which will increase grant making efforts.

One of our greatest achievements in this area came in the latter part of 1990. Dr. Shoichiro Toyoda, president of the Toyota Motor Corporation, wrote us announcing the creation of a \$1,000,000 Toyota Motor Corporation Endowment Fund to be administered by the SME Foundation.

Dr. Toyoda stated that their gift will be payable in two \$500,000 payments during 1990 and 1991.

Fund raising successes like this one will enable our \$4.7 million endowment to help leverage the important cash and equipment gifts that we continue to seek.

Thus, as you read this report with its many highlights, I ask that you renew your commitment to the SME Foundation as an active partner in improving manufacturing productivity through education. Your continued support of the Foundation today will help ensure a competitive and prosperous industry tomorrow.



Dr. Shoichiro Toyoda

## SPECIAL AWARDS

The Foundation administers capital equipment gifts and special award programs which are included in the Grant Proposal Package.

In-kind gifts donated through the SME Foundation with a retail value of \$10,000 or more are briefly described herein. Those gifts having a retail value of less than \$10,000 are listed:

### CADKEY Software Gift Program

CADKEY Inc. donated up to twenty-five microcomputer software packages in CAD/CAM valued at \$3,195 each.

### CADKEY Solids Software Gift Program

CADKEY Inc., donated up to twenty-five solids software in the area of computer-aided design and valued at \$1,000 each.

### Challenge Grant for Capital Equipment

P  
e  
L  
L  
N  
S  
M  
G  
  
M  
ea  
N

SPRING, 1991

SME Foundation Annual Report