



**E D U C A T I O N
F O U N D A T I O N**sm

2007 ANNUAL REPORT



Inspire · Support · Prepare

Board of Directors 2008

President:

Glen H. Pearson
Director, Manufacturing Research & Engineering
Eastman Kodak Co. (Retired)

Vice President:

Khalil S. Taraman, PhD, FSME, PE
D.I.T. Chair of Manufacturing Engineering
Lawrence Tech University

Secretary:

Winston F. Erevelles, PhD
Dean, School of Engineering, Mathematics and Science
Robert Morris University

Treasurer:

Peter F. Mackie
Senior Financial Consultant
A.G. Edwards & Sons, Inc.

Director:

Bart Aslin
SME Education Foundation

Directors:

Douglas E. Booth, FSME, LSME, CMfgE, PE
Consultant – Product & Business Development
Peak Industries, Inc. (Retired)

Sandra L. Bouckley
Director, Advance Manufacturing Engineering-FWD
Chrysler LLC

Charles M. Chambers, PhD, JD
President Emeritus
Lawrence Tech University

Gregg O. Ekberg
Chief Operating Officer
Pharmatech Associates

Steve Megli
Plant Manager FAB 12
Intel Corporation

Eugene (Gene) M. Nelson
Director, Advanced Manufacturing Pre-Program
Engineering
Ford Motor Co. (Retired)

Monica Pfarr
Director, Engineering Terminology & Manufacturing
Solutions
Director, Project Lead the Way (Ohio)
Sinclair Community College

Pamela J. Ruschau, Esq.
Attorney
Leydig, Voit & Mayer, Ltd.

Cecil W. Schneider, FSME, LSME, PE
President
CEC Technologies

William R. Segar
Director of Engineering
Bombardier Transportation (Retired)

Kenneth Vedra, PhD
Superintendent
Bellingham Public School District 501

Albert (Al) Wavering
Division Chief, Intelligent Systems Division
National Institute of Standards and Technology (NIST)

Robert T. Williams
Vice President, US Operations Division
Caterpillar, Inc.



Dear Friends:

To remain an economic powerhouse, America must stay at the forefront of science and engineering achievement. That precept guides the work of the Society of Manufacturing Engineers Education Foundation, which, for nearly three decades, has pioneered initiatives and invested in programs to help ensure the quality and quantity of America's future manufacturing workforce.

While industry and academic statistics point to some formidable challenges ahead, the SME Education Foundation continues to make significant progress, building on our solid base of innovative programs and committed partners who share our passion for manufacturing workforce development.

INSPIRE: Our biggest success story of 2007 is the dramatic growth of our Gateway Academy program. This hands-on, technology-based summer event is designed to introduce middle school students to the wonders of science, technology, engineering and mathematics in a stimulating, yet fun environment. We expanded our Gateway Academies from four academies in two states to 55 academies in 15 states, impacting the lives of more than 1,200 students. Developed in collaboration with Project Lead the Way® (PLTW), the Gateway Academies link fifth and sixth graders to the nationally recognized "Gateway to Technology" program, a standardized pre-engineering curriculum for middle school students.

SUPPORT: With the help of many generous donors, the SME Education Foundation has established an enviable scholarship program. Since 1998, we have provided nearly \$3 million in scholarships, yielding direct and often life-changing impact on the students who receive them. Our scholarship program grew substantially in 2007, awarding 130 students over \$418,000. We expect an equally robust 2008, as we plan to award more than \$475,000 in student scholarships.

PREPARE: Through our Manufacturing Education Plan grants program, we have awarded nearly \$16 million for new engineering-related programs and innovative curricula improvements at numerous colleges and universities. In 2007, we continued this tradition by presenting grants to colleges and universities totaling \$407,000 to help fund new degree programs, new labs and special research initiatives.

In 2007, we continued to expand our collaborative outreach, adding more than a dozen new partners while gaining key endorsements from several government agencies and industry trade associations. We continue to seek new partners who share our passion for improving America's manufacturing future, and we welcome your involvement in this important effort.

In order to ensure that America has the engineering and technical workforce it needs for the future, we must encourage the next generation to explore and pursue careers in science, technology, engineering and mathematics. We must provide the experiences and resources for students to make informed decisions about these disciplines. This goal cannot be achieved through a single act or by a single group – it requires a sustained effort and broad collaboration. The time to act is now, because the future will be here faster than we think. I look forward to working with you to meet these challenges – today, tomorrow and beyond.

Sincerely,

A handwritten signature in black ink that reads "Glen H. Pearson". The signature is written in a cursive, flowing style.

Glen H. Pearson
President-2008
SME Education Foundation

Inspire



American manufacturers increasingly need more skilled workers – a national talent gap that is projected to grow as the number of students pursuing engineering degrees continues to decline nationwide.

The SME Education Foundation develops innovative programs and provides resources designed to ignite and fuel the curiosity of young people about science, technology, engineering and mathematics. The ultimate goal is to meet the needs of industry by increasing the number of students choosing these career fields.

One challenge lies in the fact that students must choose these academic paths early. To pursue a technology or engineering-related degree in college, students need a solid foundation of math and science education in high school. This means we must capture students' attention early – in middle school and even in the elementary years while they are forming their perceptions about these disciplines. We also must convey the new reality of manufacturing: It offers high-paying, challenging jobs in high-tech, sophisticated environments.

A major success story continues to be our Gateway Academy programs. These hands-on, project-based learning programs engage and stimulate students, challenging them to solve real-world problems using scientific knowledge and analytical thinking. Students see first-hand the crucial role that science and engineering play in forging their future, and the career opportunities these disciplines offer them.

Gateway Academies have proven popular with young people, but to meet the growing demand for highly skilled manufacturing and technology workers, these programs must expand. Under our leadership with Project Lead the Way®, individuals and industry partners have opportunities to support the SME Education Foundation's efforts. Donations to the SME Education Foundation's youth-outreach programs are truly an investment in the future of manufacturing.



"Students do not always obtain mastery of key concepts at the elementary and middle school levels, thus limiting academic success at the high school level."

"To meet the Nation's demands for a numerate and technologically and scientifically literate workforce, the U.S. needs a nationally coherent STEM education system."



"Strengthening STEM education across the Nation is critical to maintaining a high quality of life for our citizens and ensuring that Americans remain competitive in international science and technology."

* National Science Board Report

Manufacturing is Cool Web site

The re-launch of our Manufacturing is Cool Web site is part of the SME Education Foundation's larger initiative. The youth-friendly Web site provides an inside look at the engineering behind many popular kids' products and various careers. Parents, teachers and students can use the site as a resource for information on college engineering programs and the SME Education Foundation.

If you haven't visited www.manufacturingiscool.com, taking time with a middle or high school student to view its contents will reward you. It is engaging, interactive and fun. And you will both learn more about the exciting world of manufacturing and the leading companies that thrive in it!

www.manufacturingiscool.com was the winner of the 2007 Progressive Manufacturing Award in the Training and Education Mastery category.



Support



Brianne Hartung

Winner of the 2006 Lucile B. Kaufman Women's Scholarship
Caterpillar Scholars Award.

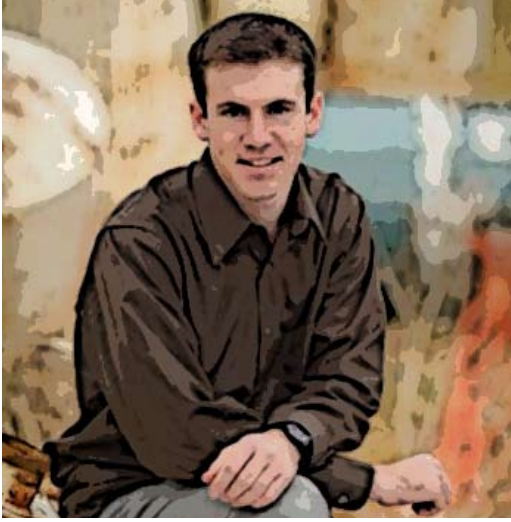
Students need support as they make career decisions, with both the right type of information and financial assistance.

Loans can pose a major financial burden to students, while the pressure of working outside jobs may discourage many from undertaking demanding engineering or technology programs. With too few students entering manufacturing and technology fields, it is critical that we encourage and support those pursuing degrees in these areas. Scholarships provide an invaluable tool in this effort.

Since 1979, the SME Education Foundation has provided over \$24 million in scholarships and awards. The annual pool of available money has grown more than 70 percent since 2000. But every year, the demand far exceeds the supply. In 2007, our scholarship program continued to grow, with 130 students receiving more than \$418,000 in student scholarships.

The SME Education Foundation's scholarship program yields significant benefits for major corporations as well by supplying skilled employees to diverse areas of manufacturing.

Here is a sampling of the impact these scholarships have on the students who receive them.



Levi Gamble

– Family Scholarship

Levi Gamble received the 2007 Family Scholarship while attending school at home in Seattle, Washington. His homeschooling environment allowed Levi the opportunity to invest in many areas of interest, including his passion for creation. Levi's gift of technical problem solving, fixing machinery, and increasing efficiency in systems became obvious at a young age. In 2006, Levi opened a business specializing in structural home repairs. Levi entered the manufacturing program at Western Washington University in fall of 2007.



Brittany Brown

– Ford PAS Scholarship

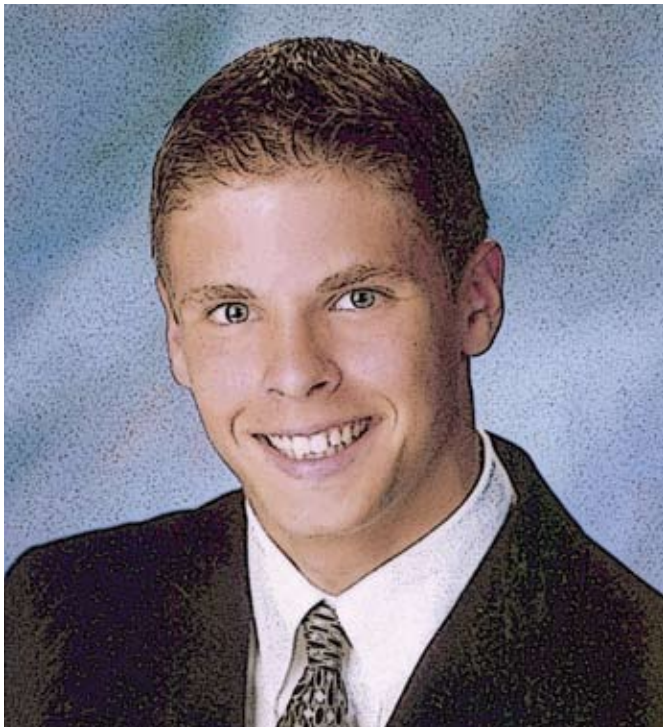
Brittany Brown received the 2007 Ford PAS Scholarship during her senior year at Henry Ford Academy in Dearborn, Michigan. Her curiosity regarding how things work has aided in her decision to enter the field of engineering. That, coupled with her 3.7 grade point average, made her an ideal recipient for this scholarship. Brittany is attending Michigan State University to study chemical and mechanical engineering.



Sarah Williamson

– E. Wayne Kay High School Scholarship

Sarah Williamson received the E. Wayne Kay Scholarship in 2007 while attending Morton High School in Morton, Illinois. As a student representative for Project Lead the Way®, her interest for engineering soared. Sarah participated as an intern with an engineering placement for Caterpillar and its Student Trainee Program. She is currently attending Bradley University in the bachelor's degree program for manufacturing engineering. Her goal is to work in the manufacturing biomedical field.



"It's impossible to underestimate the impact that the SME Education Foundation has had on my life. I will always support the SME Education Foundation however I can, so that they can keep supporting other kids, making their dreams possible, too."

Eric Laumann, 2003 Family Scholarship Recipient

Graduate – University of Notre Dame, Spring 2007
Bachelor of Science-Engineering

"Until I began school and realized the many costs involved with higher education I had not understood the profoundness of this honor. Now I don't know how I can ever thank you all enough. It has made it possible for me to turn my entire attention to learning and not have to worry about how I am actually going to pay for it! I only wish that more people could receive such a wonderful gift."

Prepare



The best way for America to retain its global leadership in science and technology is by putting more resources into education, research and innovation.

Researchers investigating promising ideas or emerging technologies often struggle to secure support from major funding agencies. But research is essential because it contributes to our knowledge about manufacturing and enriches students' educational experiences.

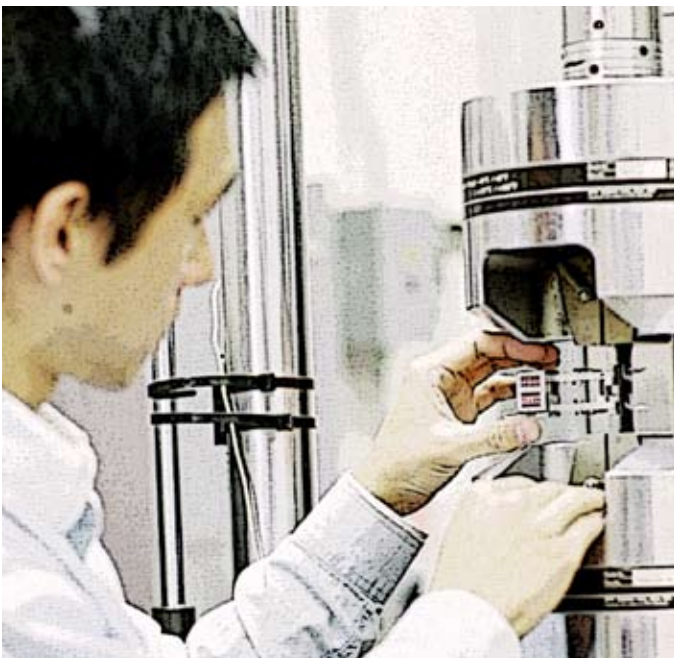
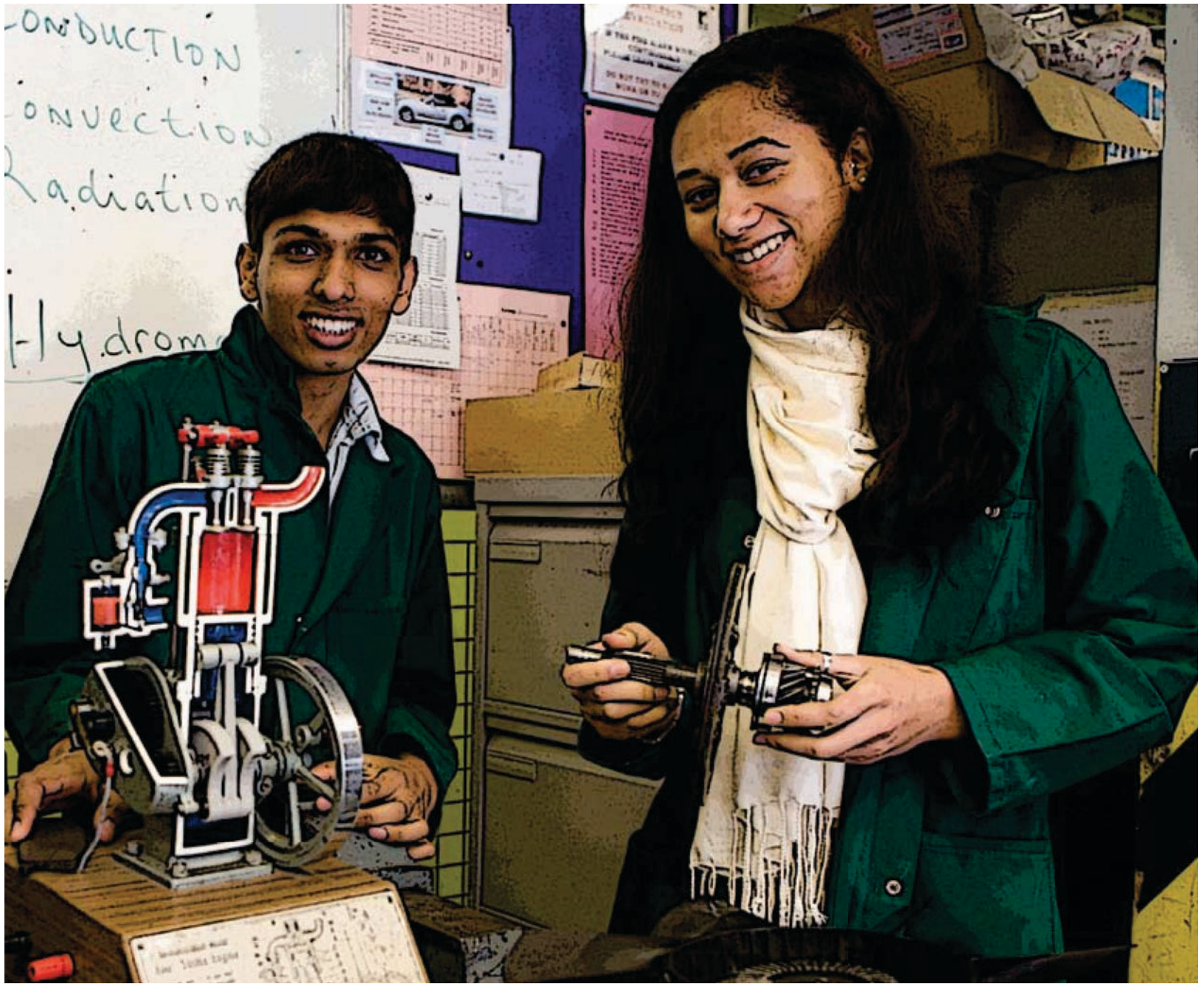
The SME Education Foundation's Manufacturing Education Plan (MEP) grants program provides critical dollars for research programs and curricula designed to stimulate students' interest, and keep our colleges and universities on the cutting edge of academic achievement.

Since 1998, the SME Education Foundation has awarded nearly \$16 million in funding, benefiting multiple industries and helping to close competency gaps. Meanwhile, manufacturers are able to hire workers with deeper and more specialized technical expertise.

In 2007, the SME Education Foundation awarded \$332,000 to the following institutions:

- **University of South Florida, Tampa, Florida**
- **University of Central Missouri, Warrensburg, Missouri**

The grants acknowledged each school's effective collaborative efforts with industry partners. Together, educators and executives of local companies designed manufacturing programs to address the competency gaps identified by the industry partners.

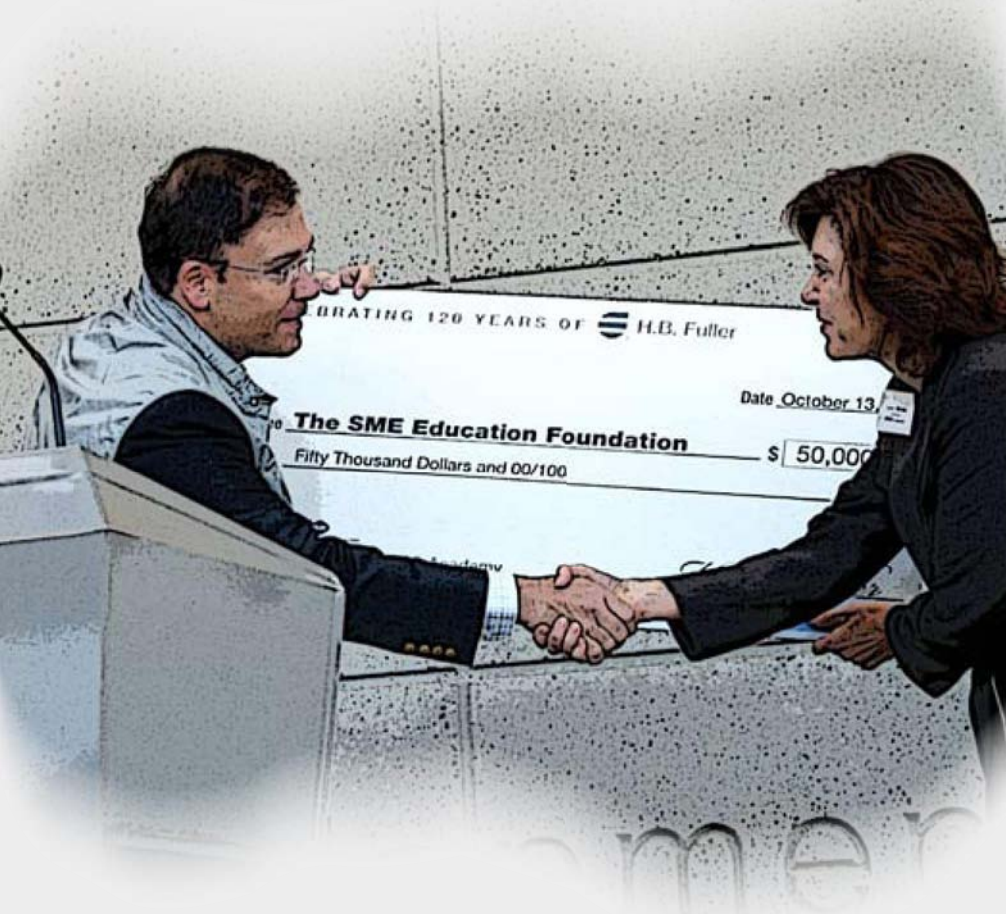


SME Education Foundation Awards Research Initiation Grants

The SME Education Foundation created its Research Initiation Grants program to give university faculty members the resources to conduct preliminary research that have the potential to attract additional support from a major funding agency. The following universities received Research Initiation Grants of \$15,000 in 2007:

- **University of Southern California, Los Angeles, California**
- **Washington State University, Pullman, Washington**
- **Illinois Institute of Technology, Chicago, Illinois**
- **Florida State University, Tallahassee, Florida**
- **University of North Texas, Denton, Texas**

Profiles



Profiles In Giving

The generosity of many individuals, organizations and corporations allows the SME Education Foundation to continue serving as a valuable resource for youth, igniting interest in math, science and manufacturing careers.

Corporate Donors:

H.B. Fuller Company

To commemorate its 120th anniversary, H.B. Fuller Company made a donation of \$50,000 to the SME Education Foundation to fund the first Gateway Academy programs in Minneapolis, Minnesota. The contribution will enable 120 middle school students to attend the programs in 2008. "With this gift, we hope to have a beneficial impact on children's education and further their interest in math, science, engineering and technology. Gateway Academies are a great fit with our company's philanthropic focus on STEM education," said Michele Volpi, president and chief executive officer. "We are excited to partner with the SME Education Foundation in making this outstanding program available to our community's youth."

Ford Motor Company

To reinforce a commitment to the education, the Ford Motor Company Fund awarded two grants, totaling \$125,000, to the Society of Manufacturing Engineers Education Foundation. One grant awards \$75,000 to support the SME Education Foundation's Science Technology & Engineering Preview Summer Programs and an additional \$50,000 grant will fund the SME Education Foundation's Ford Partnership for Advanced Studies Scholarship. "Ford is proud to collaborate with the SME Education Foundation," said Mike Schmidt, Contributions Director for Education, Ford Motor Company Fund. "Ford's Partnership for Advances Studies Scholarship and the STEPS Programs are two ways to get youth engaged and help fill America's workforce shortage in our industry."

Individual Donors:

Robert Laumann Charitable Remainder Trust

The SME Education Foundation received a major contribution this past year in the form of a Charitable Remainder Trust established by long-time SME-EF member Robert C. Laumann. In addition to providing income and estate planning advantages to Mr. Laumann, upon his passing, the remainder of the trust will be directed to SME-EF where it will be used to perpetuate the work of the foundation and benefit future manufacturing engineers and technologists.

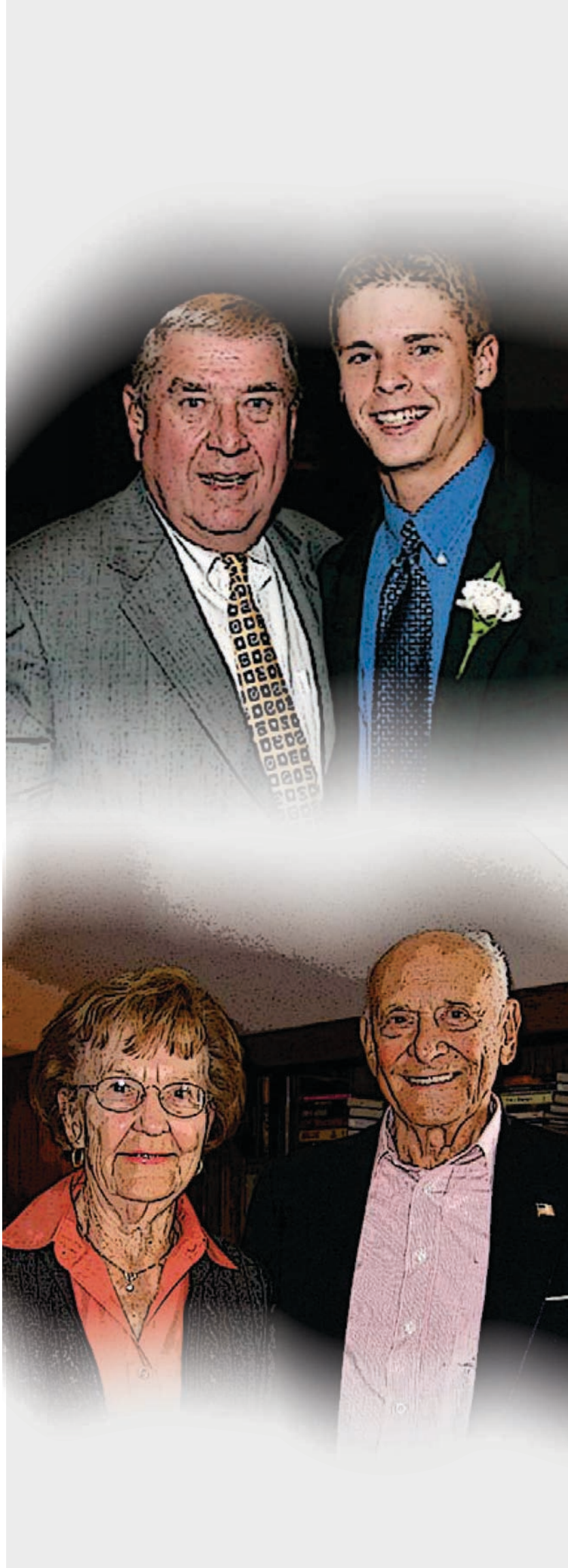
Mr. Laumann is a 50-year member of SME-EF and served as chairman of the Dayton, Ohio, chapter and Region IV. He also served six years on the SME-EF board of directors. In his professional life, Mr. Laumann was president of Technical Equipment Machine Tool Distributor in Cincinnati and served as chairman of the American Machine Tool Distributors Association.

Mr. Laumann's dedication and passion for manufacturing and engineering has made an impact on others in his family. Eric Laumann, Robert's grandson, was the winner of the 2003 SME-EF Family Scholarship. Eric recently graduated from Notre Dame with a degree in mechanical and aerospace engineering.

Because of Robert Laumann's foresight and generosity countless individuals will benefit from his gift.

Francis Sehn

The SME Education Foundation received a donation from Mr. Francis Sehn to further University of Wisconsin-Stout's STEPS program in order to introduce more women to Science, Technology, Engineering and Math (STEM) careers. Mr. Sehn has been a leader in manufacturing engineering throughout his life, serving as president of the SME-EF from 1965 – 1966. In his professional career he was assistant chief engineer for the General Motors Tank Program and General Master Mechanic for the E.W. Bliss Co. Mr. Sehn also founded two successful engineering companies: The Fran Sehn Co., a consulting group, and Press Automation Systems Inc. In addition to supporting the SME-EF, Mr. Sehn made an initial donation of \$1 million to the Center for Oral History, which is a program created by West Point Military Academy to collect recent combat experiences from privates to generals.



Donors

The individuals, organizations and corporations recognized in this Donor Honor Roll have made a commitment to support the SME Education Foundation. It is through their help that the SME-EF is able to inspire, support and prepare tomorrow's manufacturing engineers.

The Heritage Society is named in honor of E. Wayne and Beulah Kay. Mr. and Mrs. Kay moved to Detroit in the early 1940's where they established a successful chrome plating company. Wayne Kay was deeply committed to the SME Education Foundation, serving as chair of Detroit Chapter 1 in 1945. Later, he was instrumental in establishing Macomb Chapter 142.

The SME Education Foundation recognizes the following individuals who through their estate planning have named the SME-EF as a beneficiary in their will or trust, or established a giving vehicle such as an annuity or remainder trust.

Raymond G. Adams
P. D. Anderson
Gilbert R. Barr
Shaker Brackett
James B. Carson
Gladys H. Cervenka*
Marcus B. Crotts
Wayne Ewing*
Lo Ree Ewing
Raymond E. Gariss
Frederick T. Gear
Ruth Jenkinson
Ralph B. Jonas
Lucile B. Kaufman*
E. Wayne Kay*
B. Bernard Kitnovski
Robert C. Laumann
Carlton R. Lindell*
Frank Lizec
L. Buell Manning
Philip R. Marsilius
Frank G. Mendl
M. Eugene Merchant*
Jerome H. Newman*
Walter E. Panse*
Joe L. Randles
Jacob D. Schiller
George Schneider, Jr.
Merrill H. Shaeffer*
Franklin D. Snyder
Gene B. Stuessy*
Robert L. Vaughn
Virginia E. Vaughn*
Allen Weber
Marie Weisel
Robert J. Wilcox
Mildred M. Wischmeyer*

* Deceased

Earl & Myrtle Walker Founder's Society

The Founders Society honors and recognizes our most generous supporters. Membership in the Founders Society is based on cumulative gifts that support the SME Education Foundation.

\$1 million level

Allen Weber
Caterpillar Foundation
E. Wayne Kay
Ford Motor Company Fund
Toyota Motor Corporation

\$500,000 level

Albert F. Wright
Earl E. & Myrtle Walker
Emerson Charitable Trust / Charles F. Knight
General Motors Foundation

\$250,000 level

The Bush Foundation
Gladys H. Cervenka
Herrick Foundation

\$100,000 level

American Electric Power Foundation
Burton E. Belzer
Carlton R. Lindell
George Schneider, Jr.
Heinz Endowments
Lockheed Martin Corporation
SME Chapter 56 - Fort Wayne
TRW Inc.

\$50,000 level

Andersen Corporate Foundation
Clyde A. Sluhan
DaimlerChrysler Corporation
Fred A. Lennon
Guiliano Mazzetti
H.B. Fuller Company
Mildred M. Wischmeyer
The Nokomis Foundation
Northrop Grumman Corporation
PACCAR Foundation
Ralph E. Cross
Rockwell Automation
Rockwell International Corporation Trust
Sally Novek/Carolyn Fisk/Janet Henderson
SME Chapter 1 - Detroit
SME Chapter 4 - Milwaukee
SME Chapter 17 - St. Louis
SME Chapter 116 - Kalamazoo
Walter E. Panse

\$25,000 level

3M Company
Albert Sargent
Alvin M. Sabroff
Autodesk, Inc.
Clinton J. Helton
The Eaton Charitable Fund
Edward S. Roth
Estate of Josephine M. Myers
Ewing M. Kauffman Foundation
Frank J. Riley, Jr.
Freightliner Corporation
Harley-Davidson Foundation
Haworth, Inc.
Intel Scholarship Fund of the Pikes Peak Community Foundation
Joe L. Randles
Joseph Richey, Jr.
Kennametal Foundation
Lucile B. Kaufman
Marcus B. Crotts
Mazak Foundation
Philip R. Marsilius
SME Chapter 52 - Wichita
SME Chapter 67 - Phoenix
SME Chapter 93 - Albuquerque
SME Chapter 198 - Downriver Detroit
SME Region 9 - North Central
SME Region 12 - Desert Pacific
Visteon Fund
William F. Hoffman, Jr.

\$15,000 level

Andersen Corporation
Anonymous
Cecil W. Schneider
The Charles DeVlieg Foundation
Engineering Information Foundation
Eugene M. Nelson
Francis J. Sehn
Glen H. Pearson
Halliburton Company
The Hartford Steam Boiler Inspection & Insurance Co.
H. Verne Loeppert
Intel Corporation
The Irene E. & George A. Davis Foundation
Raymond G. Adams
Reginald W. Barrett
Robert L. & Virginia E. Vaughn
Robert T. Gunter
SME Chapter 63 - Portland
SME Chapter 105 - Memphis
SME Chapter 260 - Silicon Forest
Society of Manufacturing Engineers
Xerox Corporation

Honor Roll

With grateful appreciation, we salute our donors with total annual giving of \$1,000 or more.

Partners Platinum Circle - \$25,000 or more

3M Company
American Electric Power Foundation
Andersen Corporate Foundation
Autodesk, Inc.
Burton E. Belzer
Caterpillar Foundation
Gladys H. Cervenka
DaimlerChrysler Corporation
Emerson Charitable Trust
Ewing M. Kauffman Foundation
Ford Motor Company Fund
H.B. Fuller Company
Intel Scholarship Fund of the Pikes Peak Community Foundation
Rockwell Automation
Alvin M. Sabroff
George Schneider, Jr.
SME Chapter 93 - Albuquerque
Earl E. Walker
Allen Weber

Partners Gold Circle - \$10,000 to \$24,999

Intel Corporation
Haworth, Inc.
Francis J. Jehn
SME Chapter 105 - Memphis
SME Chapter 23 - Quad Cities
SME Chapter 63 - Portland

Partners Silver Circle - \$5,000 to \$9,999

Freeman
Harley-Davidson Foundation
Lucile B. Kaufman
Society of Manufacturing Engineers
Sherril K. West
Robert T. Williams

Partners Circle - \$1,000 to \$4,999

Raymond G. Adams
American Axle & Manufacturing Inc.
Anonymous
Douglas E. Booth
Sandra L. Bouckley
Forrest D. Brummett
Patricia A. Brummett
CIM in Higher Education Alliance
Charles D. Cox
Winston F. Erevelles
Fabricators & Manufacturers Association, International
Harry J. Foehringer
Wayne F. Frost
Robert E. Gilmore

F. Brian Holmes
W. Gordon Hunt
Kuroda Precision Industries Ltd
Robert C. Laumann
H. Verne Loeppert
Eugene M. Nelson
Glen H. Pearson
Powell Tool Supply Inc.
Pamela J. Ruschau
The Schron Family Foundation / Jack H. Schron
Solar Turbines Inc
Mark J. Stratton
Khalil S. Taraman
Mark C. Tomlinson
Guenter Warnecke, Dr.-Ing
Albert J. Wavering, III
George E. West, Jr.

Friends of the Foundation

Every gift, no matter what the size, is highly valued and contributes to developing the future manufacturing workforce.

\$500 to \$999

Jeffrey J. Arnold
Carr Lane Manufacturing Company
Nathan H. Cox
Barbara M. Fossum
Fusion Design, Inc. / Mark Brinkerhoff
William J. Huot
Doris & Warren Hutchings
Jionghua (Judy) J. Jin
Richard L. Keggs
Virginia M. Keller
Philip R. Marsilius
Kenneth C. Novak
A. James and Barbara Parfet
Foxhall A. Parker
G. Scalia
William R. Segar
SME Chapter 1 - Detroit
Votaw Precision Technologies, Inc.
Bradford S. Whiting

\$100 to \$499

Hadi A. Akeel
Richard C. Anderson
Hemagiri H. Arumugam
Bart A. Aslin
Allison Ayers
Michael A. Aznavorian
Gregory L. Bainter
Sidney C. Banwart
Kristine Beauchamp
Becton Dickinson and Company
Arthur J. Beutler
Michelle & Stanley Bies
Oldrich F. Bitnar
J T. Black
Dawn Blackwell
Ronald A. Bohlander
Paul D. Bradley
James M. Bruvelis
Peter Z. Bulkeley
Kathleen M. Burnham
Charles F. Carter, Jr.
Kathleen Carter
Deborah Clark
Crotts & Saunders Engineering, Inc.
Marcus B. Crotts
Raymond E. Davis
Jacquelin Dedona
Henry L. Derocher
Marvin F. DeVries
Walter C. DeVries
Frank G. Dommen
Robert A. Dougherty
Neil A. Duffie
Osama M. Ettouney
Mitchel L. Evans
William M. Ferguson
Robert W. Ferrari
Ryan W. Fisher
Donald G. Foster
Kenneth C. Gamble
Mark D. Gartner
Luther A. George
LaRoux K. Gillespie
Keith H. Griffin
John & Donna Groomes
Rodney G. Grover
Teresa J. K. Hall
Kevin G. Harding
Ronald P. Harrelson
Robert D. Harris
Ola Harrysson
Charles E. Hattery
Matthew L. Hilgendorf
Roger C. Hinman
Iwona M. Hiszpanski
Debbie Holton
Frank W. Hughes
Interstate Diesel Service, Inc. / Alfred J. Buescher
David R. Jurman
Robert D. Keiser
Robert T. Kibler, Jr.
Francis & Lucy King
John G. Knust
Bruce M. Kramer
Robert and Anita Lesovsky
Gail M. Lofdahl
Los Angeles Chapter of the National Tooling & Machining Assoc.
Bruce G. MacKender
Peter F. Mackie
Peggy McIntyre
Frank E. Melograno
Richard and Bonnie Merk
Gary M. Mikola
Delmo & Diane Molinari
M. David Moulton
MP Tool & Engineering Co. / Longine V. Morawski
Rodney L. Mueller
Dilip K. Mullick

NR Wirsching Enterprise / Norbert Wirsching
Donald O. O'Bannon
Robert M. Oestreich
Ronald R. Oeters
Richard P. OLeary
Elsayed A. Orady
Robert E. Partarrieu
Richard C. Peters
Doreen G. Politi
Robert H. Potter
Prebelli Industries Inc. / Gilberto Prebelli
Precision Screw Thread Corp. / Glenn R. Simpson
Steve Quinlan
Rabbit Tool USA Inc. / O. J. Birkestrand
Martin C. Retherford
Bill Richardson, III
John B. Ruegg
John F. Saenz
Richard N. Sarns
Margaret Satoh
Kathryn Scherbarth
John A. Schey
Cecil W. Schneider
Schroeder Tool and Die Corp.
Robert J. Schwinghamer
Carol Selleck
Marcia Shannon
Gregory S. Sheremet
Richard W. Shoemaker
Kuk Ming Si
SME Chapter 198 - Downriver Detroit
Ann L. Sorenson
James T. Spilos
Kim K. Stebbins
Kenneth W. Stier
William M. Stock
Donald L. Strunk
Pamela J. Styles
Jay C. Taylor
Tyco International Inc. / Jason P. Kuntz
Stewart C. Wagner
Kuo K. Wang
Marie Weisel
Thomas M. West
Betty J. Westerkamm
Thomas F. Williams, Jr.

Up to \$100

Peter L. Amacher
Rakshit Amba
Gabiella L. Anderson
Ramon Aniello
Seymour Barnett
Gary Bartlett
Dean E. Beutel
Elizabeth Billings
Blair I. Bondar
Kendell & Shirley Bone
Charles W. Books
Geoffrey Boothroyd
Harlan W. Boyce
Louis P. Bredesky, Jr.

William D. Burke
Guido E. Caglieri, Jr.
Gerald L. Calvert
Phillip G. Canipe
Elvira Carrera
Kevin J. Carroll
Jim Colegrove
Joe Consoli
Tyrone E. Cottingham
Hymie Cutler
John V. Daniluck
Alan J. Demello
Frank A. DePaola
James E. DeZutter
Richard W. Dick
James C. Diefenderfer
Valerio DiGiovanni
David A. Dornfeld
James W. Ellington
William E. Estrem
Otto F. Faerber
Saul K. Fenster
Steven P. Fielding
Ed & Vivian Fountain, Sr.
Frederick V. Fowler, Jr.
Alvin R. Fritz
Chris B. Galgocy
Boris Garber
David & Anne Goehring
Michael J. Golowka
Ignacio Gonzalez
Helen W. Greathouse
Group Alpha Solutions Inc. / Robert D. Cahill
Gus Grozdon
Gilbert L. Haggen
Jeffrey L. Harrison
James P. Hart
John C. Hayden
Ernesto Hernandez
La Verne Heuvel
Robert Hilton
Robert J. Huelsman
Robert H. Humphries, Jr.
Stanley N. Ihekweazu
Jodela Creations / John D. Langwell
Bruno Juanes
William J. Kessler
Bonnie & Denis Kesterson
Nick S. Khoury
Bret J. Kivell

Robert & Shirley Knutsen
Anthony R. Konecny
Edward M. Korte
James J. Kraft
Akihiko Kumagai
Michael A. Lahoud
Timothy G. Lange
Robert L. Larson
Lloyd J. Lazarus
David G. Lee
Phillip C. Lee
Frances J. Legg
Bruce E. LeMaster
Walter G. Lineback
Paul J. Lombardi
Rodger Marble
Salvador Martinez
Riley H. Mayhall, III
Edward D. McCallum, III
Jeanie S. McCoy
Tim M. McGuirk
Christine C. Milantoni
William J. Mitchell
Joseph M. Mocny
Edie Moore
Jack E. Myers
Lynn O. Pfeiffer
William R. Plourd
Leon Pollack
Walter V. Polocanin
John W. Priest
Thomas Prossima, Jr.
Q Shop Inc.
Dale L. Ralph
Wilfred J. Renaud
Eugene H. Ricketts
Beat A. Ries
Joseph M. Rua
Donna & Michael Salamone
Karl L. Sanda
Ronald F. Schildge
B. Robert Schneider
Oscar M. Schroll
Karl H. Schulz
Xavier Sergio
John Settineri
John Sharman
Gayle W. Shearer
Ivar Skovseth
SME Chapter 165 - Manila
SME Chapter 354 - Northern Colorado

Harry R. Soderstrom
Gloria Solomon
Sharon A. Soubly
J. Eldon Steelman
Ernest G. Stevens
Structural Engineering Consultants, P.A. /
Terry G. Noltensemeyer
George P. Sutton
Stanley A. Szylo
Richard E. Teets
Anthony J. Teresi
James H. Tinkler
Duane & Pam Toderan
Chin H. Toh
Victoria Townsend
Robert M. Trapp
David M. Turner
Gary F. Uthenwoldt
E. Lincoln & Barbara Van Sickle
James F. Vatalaro
Lawrence D. Vickers
Donald L. Walker
Andrew & Carrie Wall
Robert E. Wallentine
Caleb Warner
Norman A. Whitaker
Glenn G. Whiteside
Jim Williams
Keith E. Williams
Anne C. Wischmeyer
Robert F. Wrench
C. F. Yap
Dolores A. Yerger
Ernest Zeller

To Honor and To Remember

The following contributors have made gifts to honor or remember valued friends and loved ones.

In Memory of Nino Scalia
*Michelle & Stanley Bies
G. Scalia
Gloria Solomon
Sharon A. Soubly*

In Memory of Forrest Brummett
Patricia A. Brummett

In Memory of Wayne Ewing
*Jacquelin Dodona
Robert Dougherty
Ed & Vivian Fountain, Sr.
David & Anne Goehring
John & Donna Groomes
La Verne Heuvel
Bonnie & Denis Kesterson
Robert & Shirley Knutsen
Robert & Anita Lesovsky
Los Angeles Chapter of the National
Tooling & Machining Assoc.
Philip R. Marsilius
Richard & Bonnie Merk
Delmo & Diane Molinari
Edie Moore
Donna & Michael Salamone
Schroeder Tool and Die Corp. /
Steve & Laure Schroeder
Francis J. Sehn
Duane & Pam Toderan
E. Lincoln & Barbara Van Sickle
Votaw Precision Technologies, Inc. /
Walt & Maxine Votaw
Andrew & Carrie Wall*

In Memory of William Weisel
Luther A. George

In Memory of William Keller
Virginia M. Keller

In Memory of Clifford Lofdahl
Gail M. Lofdahl

In Memory of E.L. (Sonny) Sanderfer, Jr.
Leon Pollack

In Memory of Andre Bigot
SME Chapter 354 - Northern Colorado

In Memory of Jay Geiser
Marie Weisel

In Memory of Robert Yerger
Dolores A. Yerger

*In Honor of Luther A. George
Marie Weisel*

www.manufacturingiscool.com



**EDUCATION
FOUNDATION**

One SME Drive, P.O. Box 930 Dearborn, MI 48121-0930 1-866-547-6333