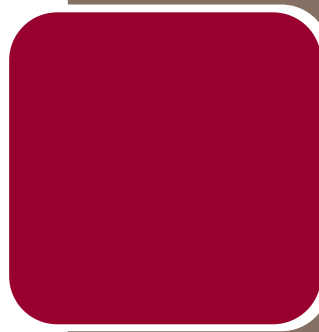


**inspire
support
prepare**





Dear Friends:

The Society of Manufacturing Engineers Education Foundation has nurtured manufacturing and engineering's future generation for 26 years. With a strategic mix of programs, supported by an active, diverse board and partners willing to work with us and support us through their donations, SME Education Foundation has made a real and ongoing impact on America's manufacturing future.

In the past year, the Education Foundation has enhanced its youth outreach program — Science, Technology & Engineering Preview Summer (STEPS) — and expanded the scholarship and the college/university grants programs — all designed to support manufacturing education and encourage engineering-related careers.

Since its creation the SME Education Foundation has championed the needs of students while also serving America's long-term interests by persistently seeking to:

- **Inspire** more young people to become excited about mathematics, engineering, science and technology and engaged early in exploring careers in manufacturing and engineering. In its 10-year history, STEPS programs have reached more than 4,000 middle and high school students. In partnership with Project Lead The Way (PLTW) in 2006 we have enhanced our STEPS program to offer STEPS Academies. This new program, with a standardized PLTW curriculum, introduces engineering to fifth and sixth graders and then links them with the highly successful PLTW, *Gateway to Technology* middle school pre-engineering curriculum. Based on our success with STEPS Academy in 2006, we will expand the number of Academies dramatically in 2007 to over 50 in 13 states.
- **Support** motivated students through scholarships that enable them to pursue their dreams. Since 1998 SME Education Foundation has provided over \$2.5 million in scholarships, funding the academic dreams of hundreds of students.
- **Prepare** graduates to "hit the ground running" through our Manufacturing Education Plan (MEP) grant program. An investment of more than \$15.5 million has acted as a catalyst to encourage collaboration between industry and educational institutions resulting in industry-driven curricula and programs.

Our society depends on technical advances made by engineers and scientists to solve many critical problems and keep our economy moving forward. We all depend on the decisions of our young people, who will learn by the examples we set. We must show them the way. Please consider joining us in setting the example and making a difference in their — and all of our — lives.

Sincerely,

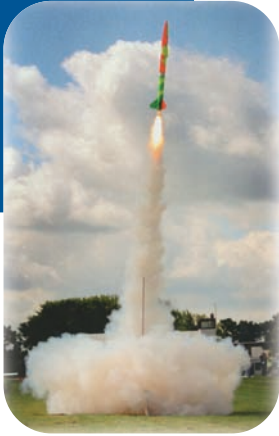
Glen H. Pearson

President 2007

SME Education Foundation



INSPIRE



Fewer young people are pursuing engineering-related careers while more engineers are retiring. The result: manufacturers will continue to experience a growing need for skilled workers.

The SME Education Foundation develops programs and provides resources to inspire more young people to pursue manufacturing-related careers. The Education Foundation's outreach program gives young people positive, hands-on manufacturing experience and exposes them to exciting careers in math, engineering, science and technology. This early exposure helps shape positive perceptions of engineering and enables young people to take the prerequisite high school course work that will prepare them to succeed as they pursue an engineering degree.

One of the innovative ways the SME Education Foundation is inspiring young people to pursue engineering-related careers is through its partnership with Project Lead the Way (PLTW). Building on the successful ten-year history of the STEPS Camp and the nationally recognized PLTW, *Gateway to Technology* pre-engineering curriculum, together the SME Education Foundation and PLTW created the STEPS Academy.

STEPS Academies provide a hands-on, project-based learning program, designed to help middle school students learn the fundamentals of advanced math, engineering, science and technology.



This [STEPS program] has changed her life. She knows she is capable of accomplishing something bigger and that everything she learns in school has a purpose. It has also made her aware that the 'tinkering' she does with her dad around the house is valuable experience and has made her aware of the importance of math in her daily life when she grows up."

Camper parent, South Dakota School of Mines and Technology

Held during the summer break, STEPS Academies:

- Engage young people in leading-edge technologies such as robotics, aeronautics and biochemistry.
- Stimulate boys and girls to brainstorm ideas, solve problems, and build bridges, racecars and other working models.
- Provide a cutting-edge program addressing the interests and energy of middle school students. The “activity-oriented” curriculum shows students how engineering can be used to solve everyday problems that are relevant to students’ lives.

The STEPS Academy is changing the perception of manufacturing. After attending a STEPS Academy, students have a concrete vision of the difference engineers make in the world. They realize that engineering is fun and exciting, and offers a way for them to use their newly-discovered science, math and technology talents to solve real problems and change the world for the better.

In the coming year, we will increase our STEPS Academies more than tenfold, offering more than 50 academies in 13 states and reaching an additional 2,000 students. This remarkable expansion is only possible through the partnership of organizations and individuals who support our focus on youth education. Donations made to the Foundation’s youth outreach programs are truly an investment in the future of manufacturing.

“The kids love the camps. They come out really eager to learn and see the relevance of what they’re learning. I think that’s so critical. It’s a wonderful investment.”

Laurie Maxson, national oversight committee for Project Lead the Way



SUPPORT



*Hemagiri Arumugam
Massachusetts Institute of
Technology
2006 Family Scholarship*

Enabling exceptional students to pursue their academic and career goals is one of the best ways we can strengthen our profession, our industry and society

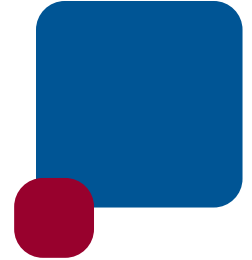
The SME Education Foundation's scholarships have a direct and often life-changing impact on the students who receive them. The financial aid makes a difference in whether a student can afford college at all, afford to attend the best college for their chosen field, or take full advantage of the educational opportunities available at the college they select.

At a time when there are already too few students entering engineering and technology fields, it is critical that we encourage and fund those outstanding students who want to pursue a degree in these areas through scholarships.

The SME Education Foundation, with the help of many generous donors, has built an enviable scholarship program offering support for exceptional students. In the last ten years alone, the Education Foundation has provided more than \$2.5 million in scholarships and awards, and in 2006 distributed more than \$384,650 in student funding. As with every year, the demand exceeds the funds available, in 2006 there were 250 applicants and 117 scholarships distributed.

The Education Foundation awards scholarships to graduating high school seniors and current students pursuing degrees in manufacturing and related fields at two-year and four-year colleges and graduate programs. Scholarship recipients typically have an exceptional record of academic achievement, and participate in and contribute to an array of extracurricular and civic activities.

The difference SME Education Foundation scholarships make is best described by the students who receive them.



“In July I will be in the Operations Management Leadership Program within GE Industrial. This is a two year program made up of four 6-month rotations. Each rotation will allow me to experience a new city, new role, and new manager. A few of the roles include quality, shop operations, engineering, and sourcing. It seemed to be the best way to start my manufacturing engineering career. I will get to experience many different aspects of manufacturing and then figure out which aspect interests me the most. I couldn’t be more excited to start this program. I owe the world to the SME Education Foundation.”

*Eric Laumann, Notre Dame, Class of 2007
2003 Family Scholarship*



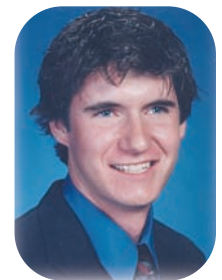
“Thank you for believing in me with such conviction that you awarded me with one of your family scholarships. My hope for attending an outstanding university has now become a reality.”

*Elizabeth Bowers, Freshman - Tulane University
2006 Family Scholarship – One Year Award*



“The first step in my career is to finish college and this scholarship gave me the opportunity to go to school. Quite literally, I would not have been able to purchase my rather expensive textbooks at the start of my classes without your generous award.”

*Aaron Smith, University of Texas - Class of 2006
2003 Earl & Myrtle Walker Scholarship*



PREPARE



The Education Foundation's MEP program yields significant benefits for industry by supplying skilled employees to diverse areas of manufacturing.

The SME Education Foundation works with business, industry, and academia to help engineering students improve their knowledge and skills so they are better equipped to meet the complex needs of today's manufacturing employers.

Through grants to colleges and universities the Education Foundation helps improve or enhance their manufacturing engineering curriculum. The purpose of the Manufacturing Education Plan (MEP) is to close specific competency gaps identified through foundation-funded studies of manufacturing education programs. Collaboration with local businesses, industry and government is a key component of those programs that have received MEP grant funding.

Since the inception of the grant program, the SME Education Foundation has provided \$15.5 million in grants to colleges and universities. In 2006, the Education Foundation awarded \$443,535 in funding to the following universities:

- Rhodes State College, Lima, Ohio
- University of Kentucky, Lexington, Kentucky

Research Initiation Grants

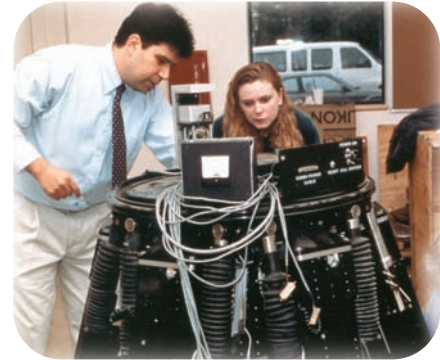
The Education Foundation created its Research Initiation Grant program to give faculty the resources to conduct preliminary research on an idea that has the potential to yield new knowledge significant enough to attract additional support from a major funding agency.

The following universities each received \$15,000 grants in 2006 through the SME Education Foundation's Research Initiation program.

- Carnegie Mellon University, Pittsburgh, Pennsylvania (2 awards)
- University of South Florida, Orlando, Florida
- Texas Tech University, Lubbock, Texas
- Worcester Polytechnic Institute, Worcester, Massachusetts

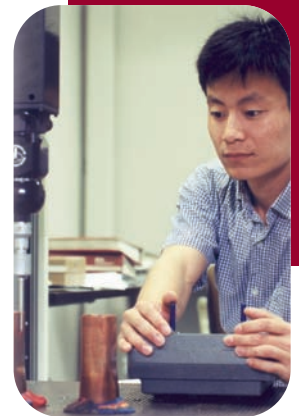
“Our ability to reach out to our high school partners, enhancing their capacity to introduce advanced manufacturing automation topics to juniors and seniors, is a direct result of a grant from the Manufacturing Education Program. We have attracted well in excess of a million dollars worth of additional investment in our program by automation technology suppliers and distributors.”

Dr. Kenneth J. Ryan
Director Manufacturing Automation Research and Education
Center for Automation and Motion Control
Alexandria Technical College
Alexandria, MN
Grants Awarded: 1999 and 2004



“[The MEP grants] biggest impact was to spark an outpouring of support for our program from industry in California. That momentum and support carried us through some upheavals and helped lay the foundation for the very successful program we have now.”

Dan Waldorf, PhD
Associate Professor
California Polytechnic State University – San Luis Obispo
Grant Awarded: 2001



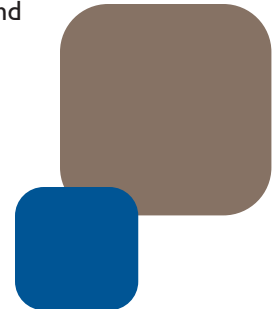


SOCIETY OF MANUFACTURING ENGINEERS

More than 25 years ago, the Society of Manufacturing Engineers recognized the need to develop future generations of manufacturing engineers and to support the advancement of manufacturing education. To that end, it created the SME Education Foundation

With the generous support of the SME, the Education Foundation has developed youth outreach programs that introduce middle school students to the exciting world of mathematics, engineering, science and technology at a critical time when they are forming their perceptions about these disciplines. As a result of these programs, students become excited about manufacturing and enter the “engineering pipeline” as they move from middle school, high school and then on to college. The programs offered by the Education Foundation compliment the opportunities available through SME for continuing education, professional development, and a successful career as a manufacturing professional.

SME and the Education Foundation are proud of their efforts and remain dedicated to providing America with an educated and motivated workforce capable of meeting the manufacturing challenges of the 21st century and beyond.



PROFILES IN GIVING

Forward-thinking corporations and generous individuals have the opportunity to support the SME Education Foundation as it continues to expand its programs to interest more young people in manufacturing-related careers.

M. Eugene Merchant Memorial Scholarship Fund

The SME Education Foundation lost a long time friend and supporter with the passing of M. Eugene Merchant, ScD., on August 19, 2006. Dr. Merchant was a past president of SME, chaired the Foundation's Proposal Review Committee for more than 20 years, and in 1999 was named Honorary Director Emeritus of the Education Foundation.

Dr. Merchant's contribution to modern manufacturing is legendary. In the early 1940s he developed the basic theory of metal-cutting. His pioneering research made it easier for manufacturing engineers to determine the type of tooling needed to provide the optimum cut, how to regulate the amount of power needed to make a cut, and the effect on the metal's temperature. His theory has been used worldwide and is still considered the best available for explaining and developing the machining process. His philosophy of computer-integrated manufacturing systems, developed in the 1950s, has become the standard operating practice for manufacturers all over the globe.

The SME Education Foundation has established an endowed scholarship in Dr. Merchant's memory. Once the scholarship reaches the endowed level it will provide funding for future manufacturing engineers, as well as serving as a lasting tribute to Dr. Merchant's pioneering research and discovery.

Arthur and Gladys Cervenka Endowment

The life and legacy of Arthur and Gladys Cervenka will continue to live on through an endowed scholarship fund established with the SME Education Foundation.

Mr. and Mrs. Cervenka began their commitment to manufacturing and manufacturing education in 1978 with regular gifts to the Education Foundation. When Mr. Cervenka passed away in March 1993, his wife ensured that his memory and dedication to SME would live on by establishing a scholarship in Arthur's name. In 2006, the Education Foundation received a final bequest from Mrs. Cervenka of \$250,000 that had been made in her will.

Mr. Cervenka, a graduate of Columbia University in New York City, was a manufacturing engineer and executive at the Grumman Corp. (Long Island, NY) from 1941 until his retirement in 1977. He served as SME president in 1967-1968; he was life member of SME and a Fellow of the Institute of Production Engineering in London.

The generosity of Mr. and Mrs. Cervenka and their commitment to manufacturing and manufacturing education will be remembered every year when the scholarship bearing their name is awarded. The SME Education Foundation has lost two good friends and steadfast supporters.



DONORS

The individuals, organizations and corporations recognized in this Donor Honor Roll have made a commitment to support the SME Education Foundation. It is through their help that the Education Foundation is able to inspire, support and prepare tomorrow's manufacturing engineers.

The E. Wayne and Beulah Kay Heritage Society

The Heritage Society is named in honor of E. Wayne and Beulah Kay. Mr. and Mrs. Kay moved to Detroit in the early 1940s, where they established a successful chrome-plating company. Wayne Kay was deeply committed to SME, serving as chair of Detroit Chapter 1 in 1945. Later, he was instrumental in establishing Macomb Chapter 142.

The SME Education Foundation recognizes the following individuals who through their estate planning have named the SME Education Foundation as a beneficiary in their will or trust, or established a giving vehicle such as an annuity or remainder trust.

Raymond G. Adams
P. D. Anderson
Gilbert R. Barr
Shaker Brackett
James B. Carson
Gladys H. Cervenka
Marcus B. Crotts
Wayne Ewing
Frederick T. Gear
Ruth Jenkinson
Ralph B. Jonas, LSME
E. Wayne Kay
B. Bernard Kitnovski
Carlton R. Lindell
Frank Lizec
L. Buell Manning
Philip R. Marsilius
Frank G. Mendl
M. Eugene Merchant
Jerome H. Newman
Jesse J. Newman
Walter E. Panse
Joe L. Randles
Jacob D. Schiller
George Schneider, Jr.

Merrill H. Shaeffer
Franklin D. Snyder
Gene B. Stuessy
Robert L. Vaughn
Virginia E. Vaughn
Allen Weber
Marie Weisel
Robert J. Wilcox
Mildred M. Wischmeyer

Founders Society

The Founders Society honors and recognizes our most generous supporters. Membership in the Founders Society is based on cumulative gifts that support the SME Education Foundation.

\$1,000,000 Level

E. Wayne Kay
Ford Motor Company Fund
Allen Weber
Caterpillar Foundation
Toyota Motor Corporation

\$500,000 Level

Albert F. Wright
General Motors Foundation
Earl E. & Myrtle Walker
Emerson Charitable Trust /
Charles F. Knight

\$250,000 Level

The Bush Foundation
Gladys H. Cervenka
Herrick Foundation

Walker Society - \$100,000

TRW Inc.
Heinz Endowments
Burton E. Belzer
Lockheed Martin Corporation
Carlton R. Lindell
SME Chapter 56 - Fort Wayne
George Schneider, Jr.

Cross Society - \$50,000

Rockwell International Corporation
Trust
Northrop Grumman Corporation
Mildred M. Wischmeyer
DaimlerChrysler Corporation
SME Chapter 17 - St. Louis
Guiliano Mazzetti
The Nokomis Foundation
Walter E. Panse
PACCAR Foundation
SME Chapter 4 - Milwaukee
SME Chapter 116 - Kalamazoo
Ralph E. Cross
SME Chapter 1 - Detroit
Clyde A. Sluhan
Fred A. Lennon
Sally Novek/Carolyn Fisk/
Janet Henderson

\$25,000

Clinton J. Helton
William F. Hoffman, Jr.
Edward S. Roth
Marcus B. Crotts
Visteon Fund
Joe L. Randles
Joseph Richey, Jr.
Philip R. Marsilius
SME Chapter 67 - Phoenix
Lucile B. Kaufman
Kennametal Foundation
SME Chapter 52 - Wichita
Frank J. Riley, Jr.
SME Chapter 198 - Downriver
Detroit
Albert Sargent
Mazak Foundation
The Eaton Charitable Fund
Estate of Josephine M. Myers
Freightliner Corporation
SME Region 12 - Desert Pacific
SME Region 9 - North Central



\$15,000

Haworth, Inc.
 Xerox Corporation
 Eugene M. Nelson
 Andersen Corporation
 Reginald W. Barrett
 Harley-Davidson Foundation
 Raymond G. Adams
 Cecil W. Schneider
 Engineering Information
 Foundation
 The Hartford Steam Boiler
 Inspection & Insurance Co.
 The Charles DeVlieg Foundation
 The Irene E. & George A. Davis
 Foundation
 H. Verne Loeppert
 SME Chapter 260 -
 Silicon Forest
 Robert L. and Virginia E. Vaughn
 Halliburton Company
 Robert T. Gunter

Honor Roll

With grateful appreciation, we salute our donors with total annual giving of \$1,000 or more.

Partners Platinum Circle - \$25,000 or more

Burton E. Belzer
 Caterpillar Foundation
 Gladys H. Cervenka
 Ford Motor Company Fund
 Earl E. & Myrtle Walker
 Allen Weber

Partners Gold Circle - \$10,000 to \$24,999

Haworth, Inc.
 Italian Trade Commission
 Joe L. Randles

Partners Silver Circle - \$5,000 to \$9,999

Glen H. Pearson
 Society of Manufacturing
 Engineers

Partners Circle - \$1,000 to \$4,999

Raymond G. Adams
 Anonymous
 Argus Machine Co Ltd. /
 Tom Hallett
 Douglas E. Booth
 Sandra L. Bouckley

Crotts & Saunders Engineering,
 Inc. / Marcus B. Crotts
 Carl A. Darger
 Mike de Irala
 Gregg O. Ekberg
 Winston F. Erevelles
 Wayne Ewing
 Wayne F. Frost
 Robert E. Gilmore
 Helen W. Greathouse
 Robert C. Laumann
 H. Verne Loeppert
 Eugene M. Nelson
 Cecil W. Schneider
 The Schron Family Foundation
 Jack H. Schron
 William R. Segar
 Francis J. Sehn
 Khalil S. Taraman
 Mark C. Tomlinson
 George E. West
 Robert T. Williams

Friends of the Foundation

Every gift, no matter what the size, is highly valued and contributes to developing the future manufacturing workforce.

\$500 to \$999

Anonymous
 Bart A. Aslin
 AutoZone Inc. / James J. Garrick
 Becton Dickinson and Company
 Clarence W. Doty
 Larron L. Fritz
 Fusion Design, Inc. /
 Mark Brinkerhoff
 F. Brian Holmes
 W. Gordon Hunt
 Eric Kam
 Richard L. Kegg
 Virginia M. Keller
 Kingsbury Corporation
 Robert J. Kolar
 Robert E. Morris
 Kenneth C. Novak
 Olympia Resort & Conference
 Center
 A. James Parfet
 Foxhall A. Parker
 Subba Rao Potru
 Alvin M. Sabroff
 Richard W. Shoemaker
 SME Chapter 238 -
 Southeast Iowa

Mark C. Tomlinson
 Guenter Warnecke
 Albert J. Wavering

\$100 to \$499

Edward H. Abbott
 John Alexander
 Richard C. Anderson
 Allison Ayers
 Michael A. Aznavorian
 Gregory L. Bainter
 Seymour Barnett
 Joseph J. Beaman
 Kristine Beauchamp
 Dawn Blackwell
 Karl E. Blalock
 BLM Group USA Corporation /
 James P. Rutt
 Ronald A. Bohlander
 Paul D. Bradley
 Thomas G. Bridge
 James M. Bruvelis
 Michael J. Calandro
 Charles F. Carter
 Kathleen Carter
 Deborah Clark
 Ronald E. Compton
 Damen Engineering /
 Peter J. Brodner
 Raymond E. Davis
 Delaware Valley Industrial
 Resource Center /
 Edward D. McCallum
 Henry L. Derocher
 Marvin F. DeVries
 David A. Dornfeld
 Robert A. Dougherty
 Neil A. Duffie
 E-Merge Systems Inc. /
 Thomas W. Lamb
 Osama M. Ettouney
 Saul K. Fenster
 Robert W. Ferrari
 Barbara M. Fossum
 Donald G. Foster
 Mark D. Gartner
 William J. Geary
 Douglas C. Genord
 Luther A. George
 Harry G. Greenleaf
 Ronald P. Harrelson
 Bradley C. Harriger
 Robert D. Harris
 Ola Harrysson
 Mary Ellen Heyde
 Jeffrey A. Hill
 Roger C. Hinman
 Iwona M. Hiszpanski

Debbie Holton
 Frank W. Hughes
 Mai Huynh
 Interstate Diesel Service, Inc. /
 Alfred J. Buescher
 Lawrence M. Jarvis
 Kato Engineering Inc.
 Ralph J. Lambertz
 David G. Lee
 Yuyi Lin
 Link Engineering Company /
 John M. Czarnik
 Bruce G. MacKender
 Peter F. Mackie
 Alan T. Male
 Philip R. Marsilius
 Peggy McIntyre
 Steven C. Megli
 Frank E. Melograno
 Arthur A. Neuendorf
 O'Boyle Enterprises Inc. /
 Peter W. O'Boyle
 Pat M. O'Connell
 Robert M. Oestreich
 Richard P. O'Leary
 Elsayed A. Orady
 Janez Peklenik
 Richard C. Peters
 Steve Quinlan
 Ralph E. Rau
 Gerald J. Rhodes
 Boyd V. Rice
 Morton H. Rochman
 Richard N. Sarns
 Paul P. Schell
 James W. Schlusemann
 Carol Selleck
 Marcia Shannon
 Kuk Ming Si
 James T. Spilos
 Mark J. Stratton
 Donald L. Strunk
 Edgar P. Taddeo
 Jay C. Taylor
 William E. Turley
 Stewart C. Wagner
 Kuo K. Wang
 Marie Weisel
 Sherril K. West
 Thomas M. West
 Betty J. Westerkamm
 Karen Wilhelm
 Thomas F. Williams
 John E. Wilson
 Thomas R. Wilson
 Marilyn H. Wischmeyer
 Warren W. Worthley

Up to \$100

Daniel Armock
 Kimberly M. Bildson
 William T. Birge
 Oldrich F. Bitnar
 Kendell F. Bone
 Charles W. Books
 Harlan W. Boyce
 James N. Brecker
 Andrew E. Brennemann
 Duncan H. Bull
 Rebecca K. Butler
 Jeffrey D. Caleshu
 Gerald L. Calvert
 Malcolm L. Campbell
 Richard M. Carroll
 Arnaldo R. Chevere
 Cincinnati Tool Steel Company
 Edward T. Cligrow
 Peter C. Contrisciane
 Richard H. Crawford
 Keith E. Dael
 Larry Dean
 Frank A. DePaola
 Frank G. Dommen
 William G. Edmiston
 Robert W. Edson
 James W. Ellington
 Joseph O. Elliott
 William E. Estrem
 Otto F. Faerber
 Harry J. Foehringer
 Robert A. Frederick
 Alden P. Gaudreau
 George G. George
 Chris B. Galgocy
 Gretchen Gmelin
 Michael J. Golowka
 Bryce N. Gray
 Sam Greenberg
 Teresa J. Hall
 David M. Hammond
 Kevin G. Harding
 Robert Harkin
 Jeffrey L. Harrison
 Charles E. Hattery
 David T. Hawley
 John C. Hayden
 Robert Heiss
 William K. Hemphill
 John Hillis
 Richard R. Hollien
 Robert J. Huelsman
 Yorick G. Hurd
 Steve E. Jacobson

Jodela Creations / John D.
 Langwell
 Ralph B. Jonas
 David R. Jurman
 Marjorie R. Kane
 Michael Kavanaugh
 Bret J. Kivell
 Diane Korona
 James J. Kraft
 Henry J. Kravec
 Jason P. Kuntz
 David A. Landau
 Homer P. Lane
 Frederick T. Larson
 Robert L. Larson
 Lloyd J. Lazarus
 David J. Lederer
 Frances J. Legg
 Marvin E. Leibson
 William J. Lemsky
 Corona M. Lewis
 Carl G. Lindemayer
 Marios Lioufis
 Gail M. Lofdahl
 Paul J. Lombardi
 Aaron Mader
 Albert G. Mangels
 Riley H. Mayhall
 Robert O. Meitz
 Miami University
 Ernest A. Miller
 William J. Moag
 Harry J. Muff
 Dora L. Murray
 Danny Newborn
 Karl G. Nowak
 Ricardo I. Ori
 Mark V. Petonic
 Norman J. Pinfield
 Gilberto Prebelli
 Thomas Prossima
 Raymond H. Puffer
 Dennis Purdy
 Dale L. Ralph
 Eric A. Rasmussen
 David R. Redding
 Wilfred J. Renaud
 Robert M. Reno
 Salvador M. Rizo
 John D. Robinson
 Richard Sanders
 Stephen S. Scelba
 John A. Schey
 Jacob D. Schiller
 B. Robert Schneider

Gene Seidler
 Gayle W. Shearer
 Louis P. Sileo
 Robert W. Slade
 Harry R. Soderstrom
 Paul N. Sorvari
 Terry Specht
 Kim K. Stebbins
 Kenneth W. Stier
 Allan E. Stix
 Greg L. Stottleyer
 Gene B. Stuessy
 H. Paul Stymelski
 George P. Sutton
 John E. Swindeman
 Stanley A. Szytko
 Richard E. Teets
 Alan J. Teichman
 Huey L. Thomas
 Raymond E. Thompson
 Bruce R. Tipton
 Chin H. Toh
 Lisa M. Uhrig
 James F. Vatalaro
 Lawrence D. Vickers
 Don Z. Vojinovic
 Stephen J. Watts
 John A. Webster
 Glenn G. Whiteside
 Keith E. Williams
 Howard T. Wilson
 Anne C. Wischmeyer
 Ronald A. Witherspoon
 Donald L. Woodard
 C. F. Yap
 Bruce R. Yeager
 Dolores A. Yerger
 Matthew K. Zents

To Honor and To Remember

The following contributors have made gifts to honor or remember valued friends and loved ones.

In Memory of Gladys Cervenka
 Morton H. Rochman
 In Memory of William Keller
 Virginia M. Keller
 In Memory of Frederick Lewis
 Corona M. Lewis
 In memory of Clifford Lofdahl
 Gail M. Lofdahl

In memory of
 Mr. & Mrs. Ralph Martin
 Marie Weisel
 In memory of Dorothy
 McCallum
 Edward D. McCallum
 Delaware Valley Industrial
 Resource Center
 In Memory of Peter Olton
 Marjorie R. Kane
 Marie Weisel
 In memory of Gerry Watts
 Marie Weisel
 In memory of William Weisel
 Kendell F. Bone
 Luther A. George
 In Memory of
 Mildred Wischmeyer
 Duncan H. Bull
 Gretchen Gmelin
 Anne C. Wischmeyer
 Marilyn H. Wischmeyer
 In memory of Robert Yerger
 Dolores A. Yerger
 In Memory of
 M. Eugene Merchant
 John Alexander
 Douglas E. Booth
 Crotts & Saunders
 Engineering, Inc.
 Marvin F. DeVries
 Clarence W. Doty
 William J. Geary
 Harry G. Greenleaf
 U.S. members of CIRP
 David G. Lee
 Alan T. Male
 Philip R. Marsilius
 Dora L. Murray
 Cecil W. Schneider
 Society of Manufacturing
 Engineers
 Albert J. Wavering
 Glenn G. Whiteside
 In honor of Luther A. George
 Marie Weisel

BOARD OF DIRECTORS 2007

President:

Glen H. Pearson

Director, Retired
Manufacturing Research & Engineering
Eastman Kodak Company

Vice President:

Sandra L. Bouckley

Plant Manager, Connor Assembly Plant
DaimlerChrysler Corporation

Secretary:

Winston F. Erevelles, PhD

Dean, School of Engineering, Mathematics & Science
Robert Morris University

Treasurer:

Peter F. Mackie

Senior Financial Consultant
A.G. Edwards & Sons, Inc.

Directors:

Douglas E. Booth, FSME, LSME, CMfgE, PE

Retired
Peak Industries

Marcus B. Crofts, FSME, LSME, CMfgE, PE

Chairman
Crofts & Saunders

Gregg O. Ekberg

President
Highline Controls Inc.

Steve Megli

Plant Manager FAB 12
Intel Corporation

Eugene (Gene) M. Nelson

Retired
Ford Motor Company

Janis G. Pamiljans

Vice President
Tactical Systems & F-35 Program Manager
Northrop Grumman Corporation

Pamela J. Ruschau, Esq.

Attorney
Leydig, Voit & Mayer, Ltd.

Cecil W. Schneider, FSME, LSME, PE

President
CEC Technologies

William R. Segar

ADtranz
Vice President, Retired

Khalil S. Taraman, PhD, FSME, PE

D.I.T. Chair of Manufacturing Engineering
Lawrence Technological University

Albert (Al) Wavering

Division Chief
Intelligent Systems Division
National Institute of Standards and Technology (NIST)

Sherril West

Vice President, Retired
Caterpillar Inc.

Robert T. Williams

Vice President, US Operations Division
Caterpillar Inc.



EDUCATION
FOUNDATION

One SME Drive, P.O. Box 930
Dearborn, MI 48121-0930

Ph: (313) 425-3300
(800) 733-4763 (USA)
Fax: (313) 425-3411

www.sme.org/foundation



EDUCATION
FOUNDATION

SM

One SME Drive, P.O. Box 930
Dearborn, MI 48121-0930

Ph: (313) 425-3300
(800) 733-4763 (USA)
Fax: (313) 425-3411

www.sme.org/foundation